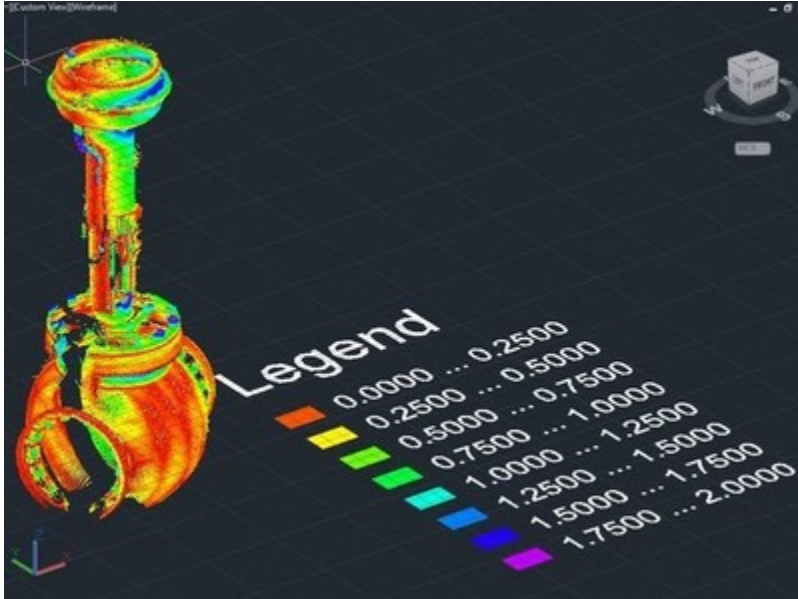


FARO® Launches PointSense 17.5 with New Tools that Dramatically Accelerate Workflows Inside Revit® and AutoCAD® for Construction BIM-CIM Users

October 12, 2016

LAKE MARY, Fla., Oct. 12, 2016 /PRNewswire/ -- FARO® (NASDAQ: FARO), the world's most trusted source for 3D measurement and imaging solutions for factory metrology, product design, construction BIM-CIM, public safety forensics and 3D solutions and services applications, announces the release of PointSense 17.5, providing powerful new tools for extracting and aligning building and plant features from point cloud data inside Revit® and AutoCAD®.



PointSense 17.5 for AutoCAD® provides more customized tools for the extraction of building components, such as walls, windows and doors. After extracting the building components, architects benefit from new alignment tools that dramatically speed up the process of delivering 2D plans from 3D point clouds.

In addition to these new features for architects, industrial facility designers also benefit from new functions for creating 3D plant models. One of the several new features is an automated cylinder extraction tool, which reduces time and simplifies 3D modeling of piping from point clouds.

Besides new tools in PointSense for AutoCAD®, PointSense 17.5 for Revit® also speeds up workflows with a new toolset for pipe modeling and a new visualization tool that shows the user only the relevant parts of the scan project that they are interested in.

"With the new pipe modeling and visualization tools in PointSense for Revit® and the advanced functionality for architects in PointSense for AutoCAD®, customers will see a dramatic increase in their daily efficiency," stated Joe Arezone, FARO's Chief Commercial Officer. "MEP engineers can work directly inside Revit®, without having to use third party software tools for pipe documentation, and architects will benefit from faster alignment workflows."

For more information on the new features please visit: <http://www.faro.com/AECsoftware17-5/>

This press release contains forward-looking statements within the meaning of the Private Securities Litigation Reform Act of 1995 that are subject to risks and uncertainties, such as statements about demand for and customer acceptance of FARO's products, and FARO's product development and product launches. Statements that are not historical facts or that describe the Company's plans, objectives, projections, expectations, assumptions, strategies, or goals are forward-looking statements. In addition, words such as "is," "will" and similar expressions or discussions of FARO's plans or other intentions identify forward-looking statements. Forward-looking statements are not guarantees of future performance and are subject to various known and unknown risks, uncertainties, and other factors that may cause actual results, performances, or achievements to differ materially from future results, performances, or achievements expressed or implied by such forward-looking statements. Consequently, undue reliance should not be placed on these forward-looking statements.

Factors that could cause actual results to differ materially from what is expressed or forecasted in such forward-looking statements include, but are not limited to:

- *development by others of new or improved products, processes or technologies that make the Company's products less competitive or obsolete;*
- *the Company's inability to maintain its technological advantage by developing new products and enhancing its existing products;*
- *declines or other adverse changes, or lack of improvement, in industries that the Company serves or the domestic and international economies in the regions of the world where the Company operates and other general economic, business, and financial conditions; and*

- other risks detailed in Part I, Item 1A. Risk Factors in the Company's Annual Report on Form 10-K for the year ended December 31, 2015.

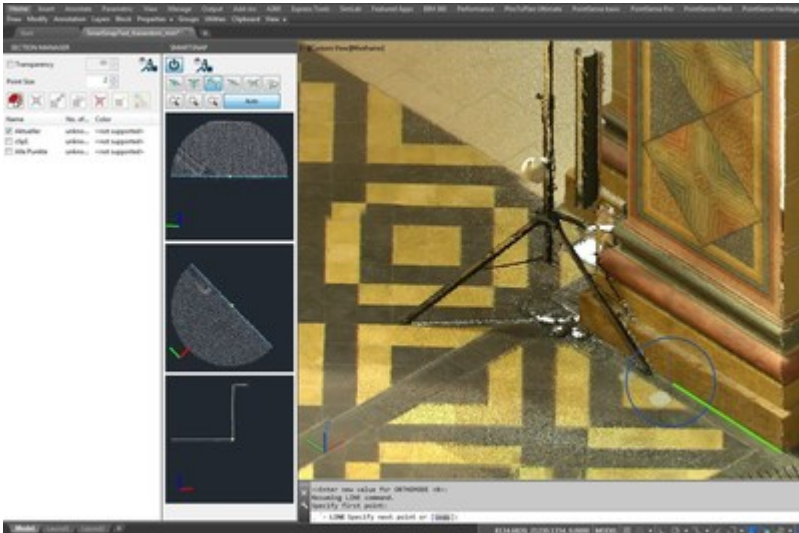
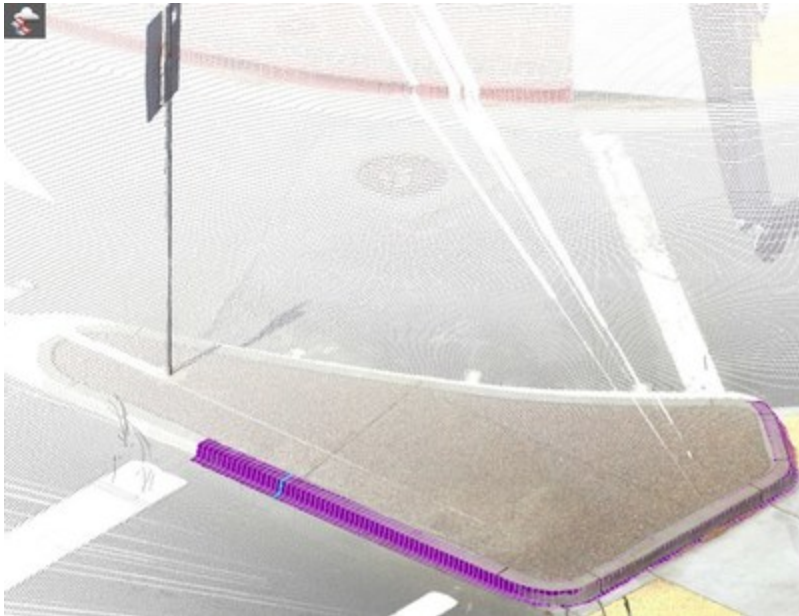
Forward-looking statements in this release represent the Company's judgment as of the date of this release. The Company undertakes no obligation to update publicly any forward-looking statements, whether as a result of new information, future events, or otherwise, unless otherwise required by law.

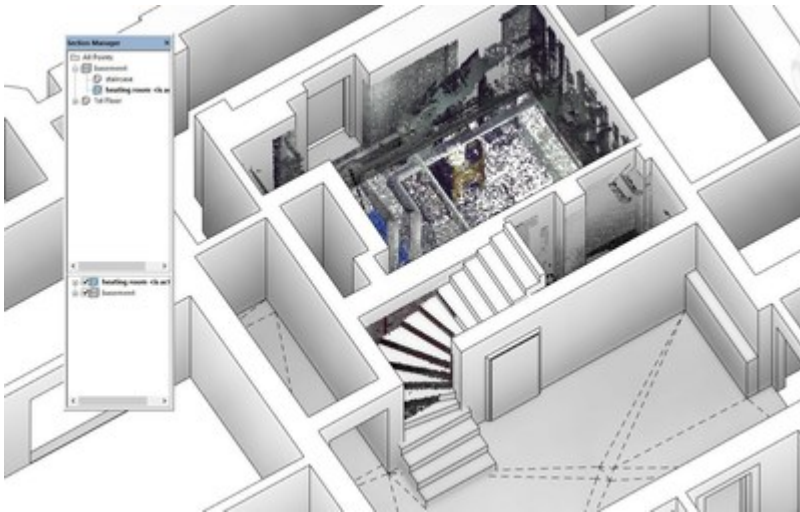
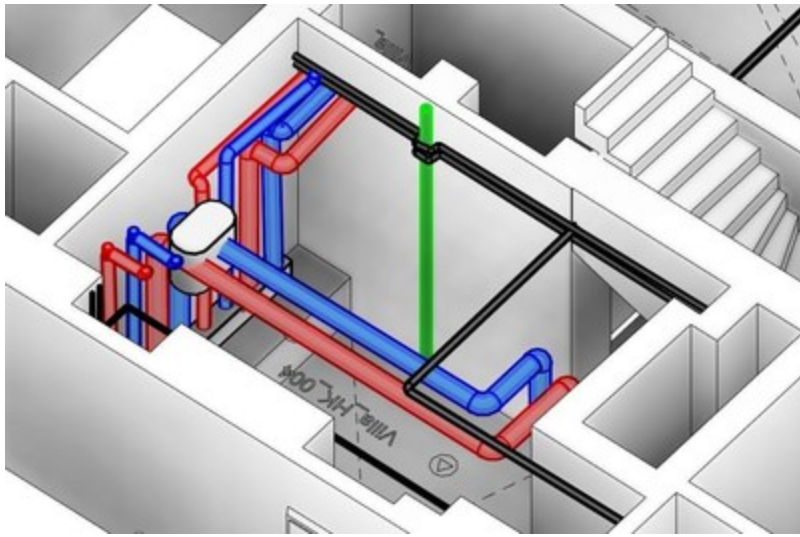
About FARO

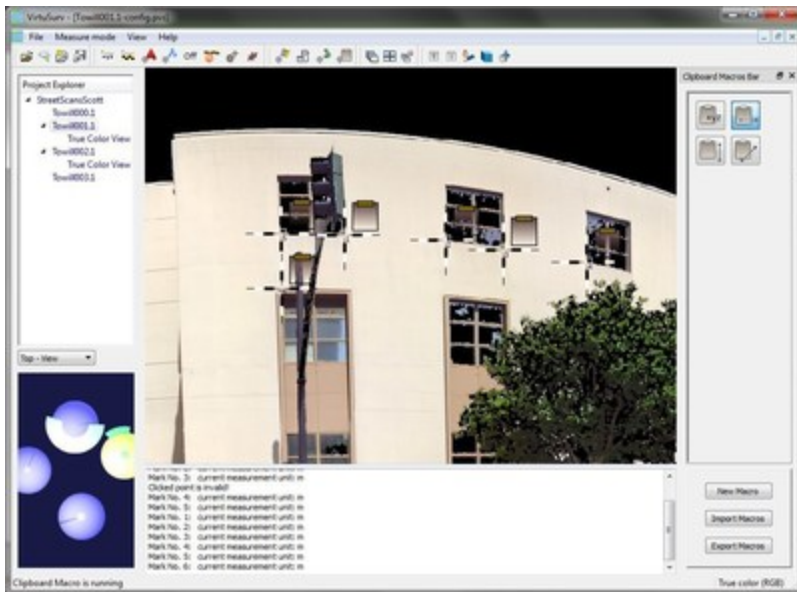
FARO is the world's most trusted source for 3D measurement, imaging and realization technology. The Company develops and markets computer-aided measurement and imaging devices and software. Technology from FARO permits high-precision 3D measurement, imaging and comparison of parts and complex structures within production and quality assurance processes. The devices are used for inspecting components and assemblies, rapid prototyping, documenting large volume spaces or structures in 3D, surveying and construction, as well as for investigation and reconstruction of accident sites or crime scenes.

FARO's global headquarters are located in Lake Mary, Florida. The Company also has a technology center and manufacturing facility consisting of approximately 90,400 square feet located in Exton, Pennsylvania containing research and development, manufacturing and service operations of its FARO Laser Tracker™ and FARO Cobalt Array Imager product lines. The Company's European regional headquarters is located in Stuttgart, Germany and its Asia Pacific regional headquarters is located in Singapore. FARO has other offices in the United States, Canada, Mexico, Brazil, Germany, the United Kingdom, France, Spain, Italy, Poland, Turkey, the Netherlands, Switzerland, India, China, Malaysia, Vietnam, Thailand, South Korea, and Japan.

More information is available at <http://www.faro.com>







- Photo - <http://photos.prnewswire.com/prnh/20161012/427886>
- Photo - <http://photos.prnewswire.com/prnh/20161012/427883>
- Photo - <http://photos.prnewswire.com/prnh/20161012/427882>
- Photo - <http://photos.prnewswire.com/prnh/20161012/427884>
- Photo - <http://photos.prnewswire.com/prnh/20161012/427878>
- Photo - <http://photos.prnewswire.com/prnh/20161012/427877>
- Photo - <http://photos.prnewswire.com/prnh/20161012/427885>
- Photo - <http://photos.prnewswire.com/prnh/20161012/427879>
- Photo - <http://photos.prnewswire.com/prnh/20161012/427880>
- Photo - <http://photos.prnewswire.com/prnh/20161012/427881>
- Logo - <http://photos.prnewswire.com/prnh/20110415/MM84316LOGO>

To view the original version on PR Newswire, visit: <http://www.prnewswire.com/news-releases/faro-launches-pointsense-175-with-new-tools-that-dramatically-accelerate-workflows-inside-revit-and-autocad-for-construction-bim-cim-users-300343647.html>

SOURCE FARO Technologies, Inc.

Nancy Setteducati, nancy.setteducati@faro.com