

Factors that could cause actual results to differ materially from what is expressed or forecasted in such forward-looking statements include, but are not limited to:

- development by others of new or improved products, processes or technologies that make the Company's products less competitive or obsolete;
- the Company's inability to maintain its technological advantage by developing new products and enhancing its existing products;
- declines or other adverse changes, or lack of improvement, in industries that the Company serves or the domestic and international economies in the regions of the world where the Company operates and other general economic, business, and financial conditions; and
- other risks detailed in Part I, Item 1A. Risk Factors in the Company's Annual Report on Form 10-K for the year ended December 31, 2016.

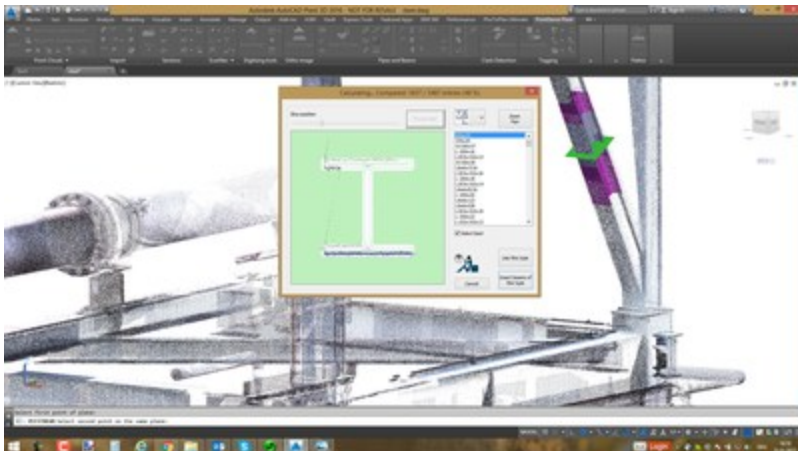
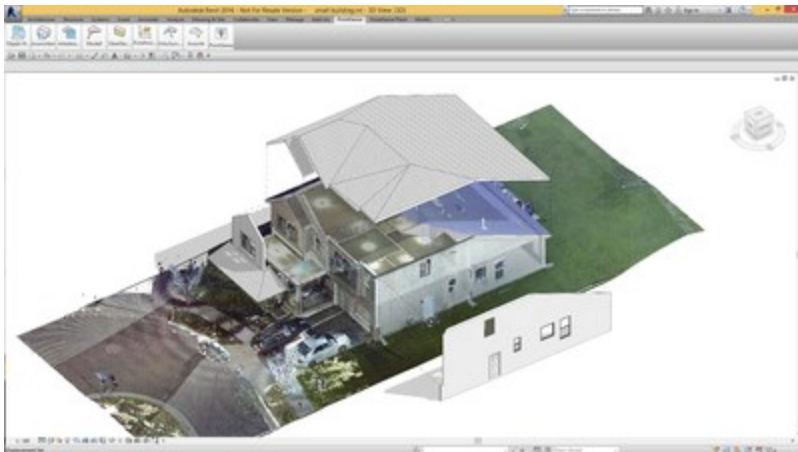
Forward-looking statements in this release represent the Company's judgment as of the date of this release. The Company undertakes no obligation to update publicly any forward-looking statements, whether as a result of new information, future events, or otherwise, unless otherwise required by law.

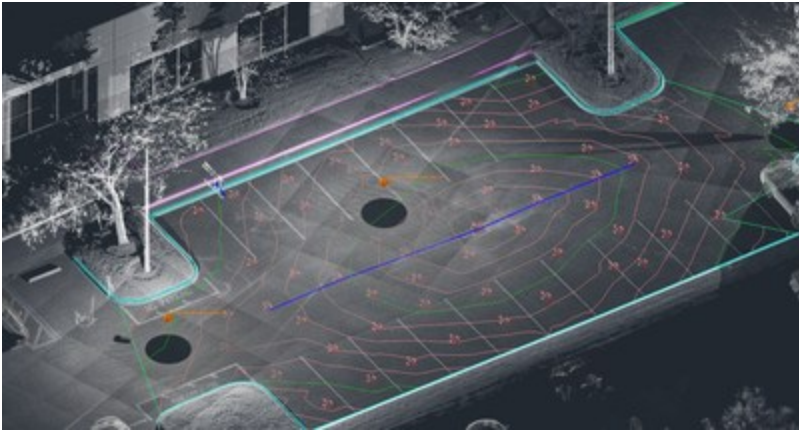
About FARO

FARO is the world's most trusted source for 3D measurement, imaging and realization technology. The Company develops and markets computer-aided measurement and imaging devices and software. Technology from FARO permits high-precision 3D measurement, imaging and comparison of parts and complex structures within production and quality assurance processes. The devices are used for inspecting components and assemblies, rapid prototyping, documenting large volume spaces or structures in 3D, surveying and construction, as well as for investigation and reconstruction of accident sites or crime scenes.

FARO's global headquarters are located in Lake Mary, Florida. The Company also has a technology center and manufacturing facility consisting of approximately 90,400 square feet located in Exton, Pennsylvania containing research and development, manufacturing and service operations of our FARO Laser Tracker™ and FARO Cobalt Array 3D Imager product lines. The Company's European regional headquarters is located in Stuttgart, Germany and its Asia Pacific regional headquarters is located in Singapore. FARO has other offices in the United States, Canada, Mexico, Brazil, Germany, the United Kingdom, France, Spain, Italy, Poland, Turkey, the Netherlands, Switzerland, India, China, Malaysia, Thailand, South Korea, Australia and Japan.

More information is available at <http://www.faro.com>





FARO®

3D VISIONARY

To view the original version on PR Newswire, visit: <http://www.prnewswire.com/news-releases/faro-introduces-pointsense-180-suite-for-construction-and-architecture-300444040.html>

SOURCE FARO

Robert Gourdine, Vice President of Global Marketing, 1-407-333-9911, robert.gourdine@faro.com